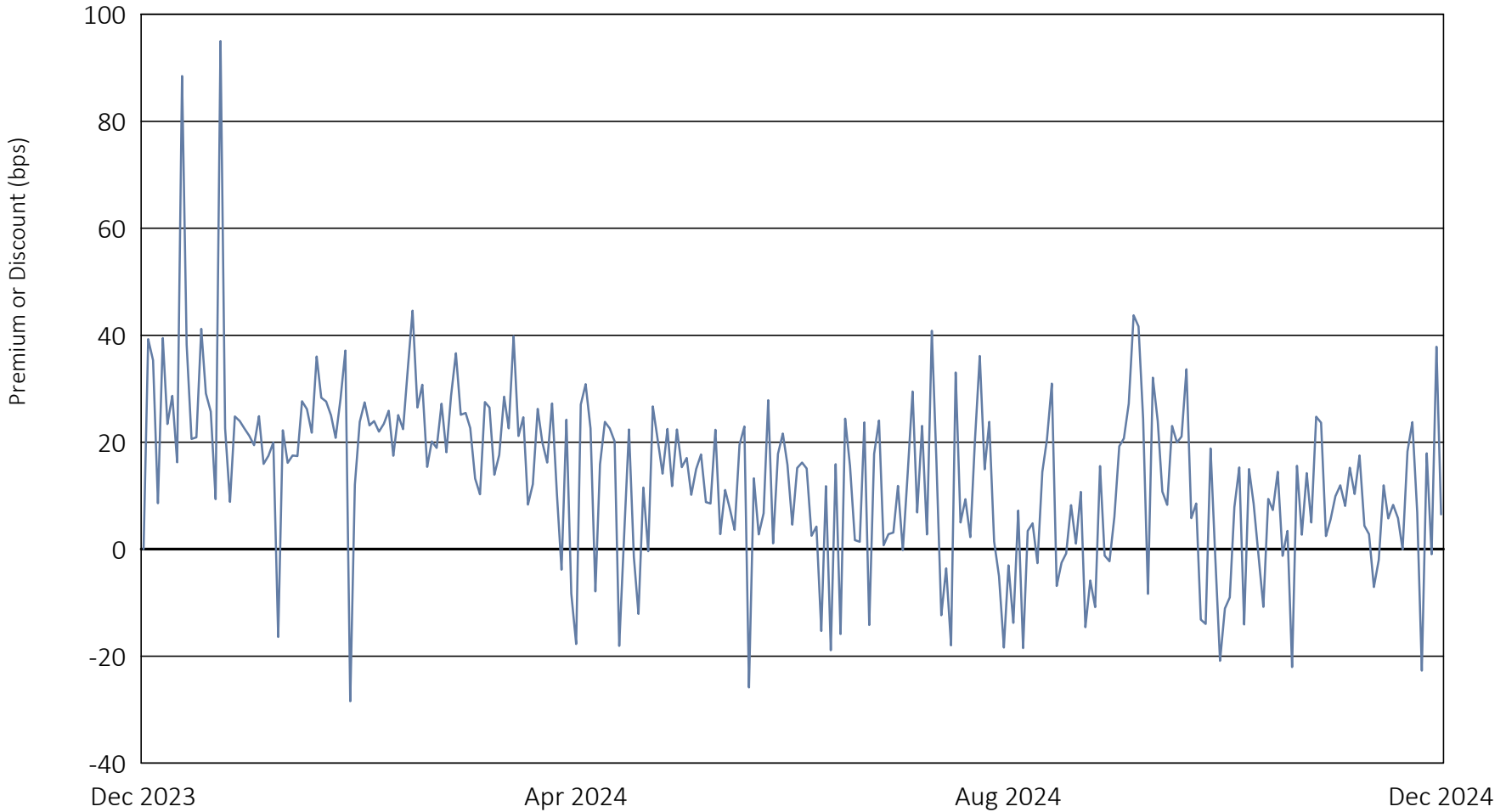


Return Stacked Global Stocks & Bonds ETF

December 04, 2023 to December 31, 2024



	Calendar Year 2023	Calendar Year 2024 through December 31, 2024
Days traded at premium	18	202
Days traded at net asset value	1	0
Days traded at discount	0	50

The following table and line graph are provided to show the frequency at which the closing price of the Fund was at a premium (above) or discount (below) to the Fund's daily net asset value ("NAV"). The table and line graph represent past performance and cannot be used to predict future results. Shareholders may pay more than NAV when buying Fund shares and receive less than NAV when those shares are sold because shares are bought and sold at current market prices.